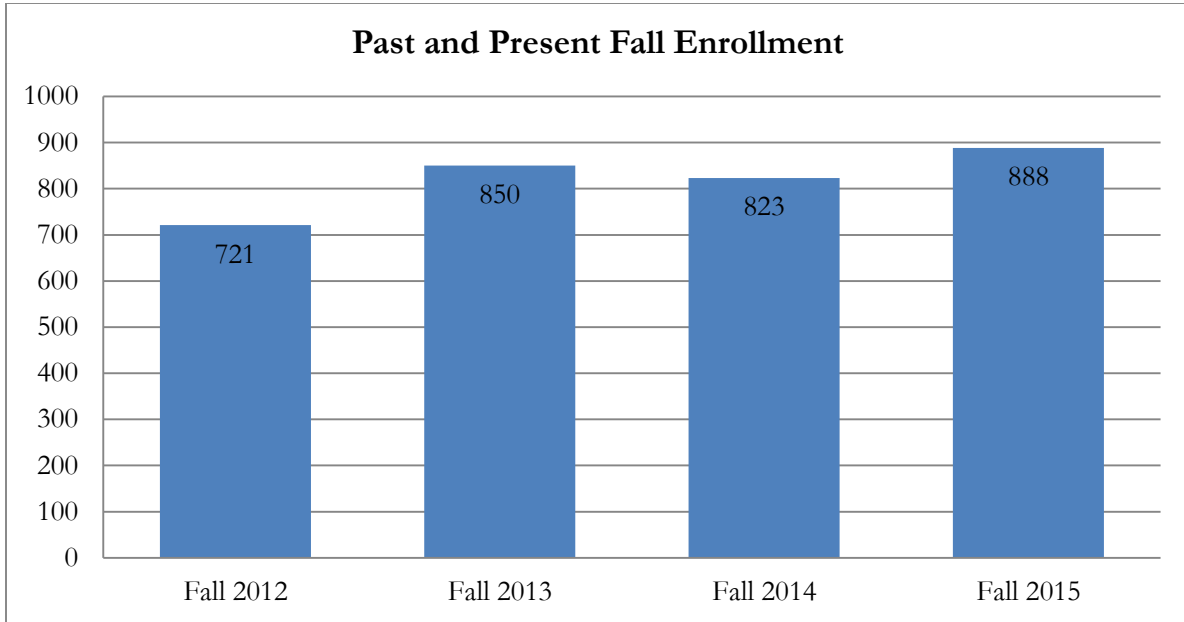


# Fall 2015 Experiential Education: Internship/Co-op Enrollment

The chart below captures the number of students enrolled in internship and cooperative education/cooperative study courses during the Fall semesters from 2012 to 2015. These numbers include students processed with the participation of the Career Services Center and those processed externally (referred to as outliers).



**565** processed through Career Services, **323** outliers

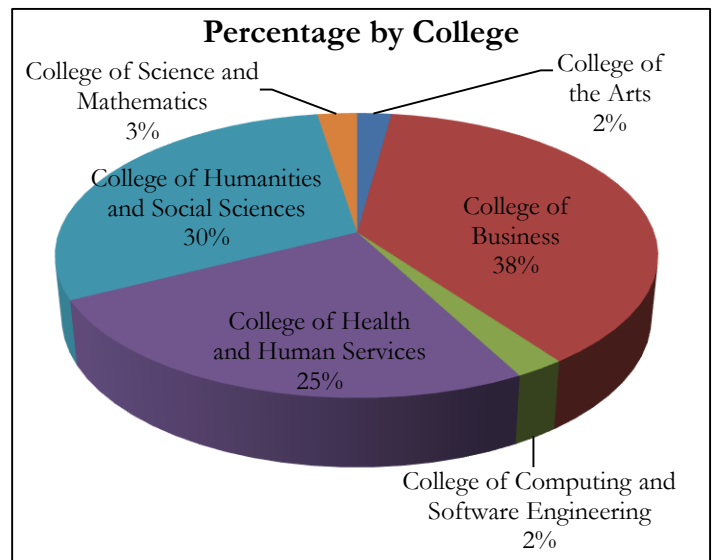
Career Services processed **63%** of all intern & co-op students

Applications processed through Career Services **increased 8%** from Fall 2014, with a **7% overall increase** in enrollment from Fall 2014.

The addition of Marietta campus internship/co-op courses would increase the total participation for the Fall 2015 semester by 102 students, bringing the overall total to **988**. Of these additional students, **81** were part of the Career Services cooperative education course (see page 3), while **21** were processed separately by their academic departments.

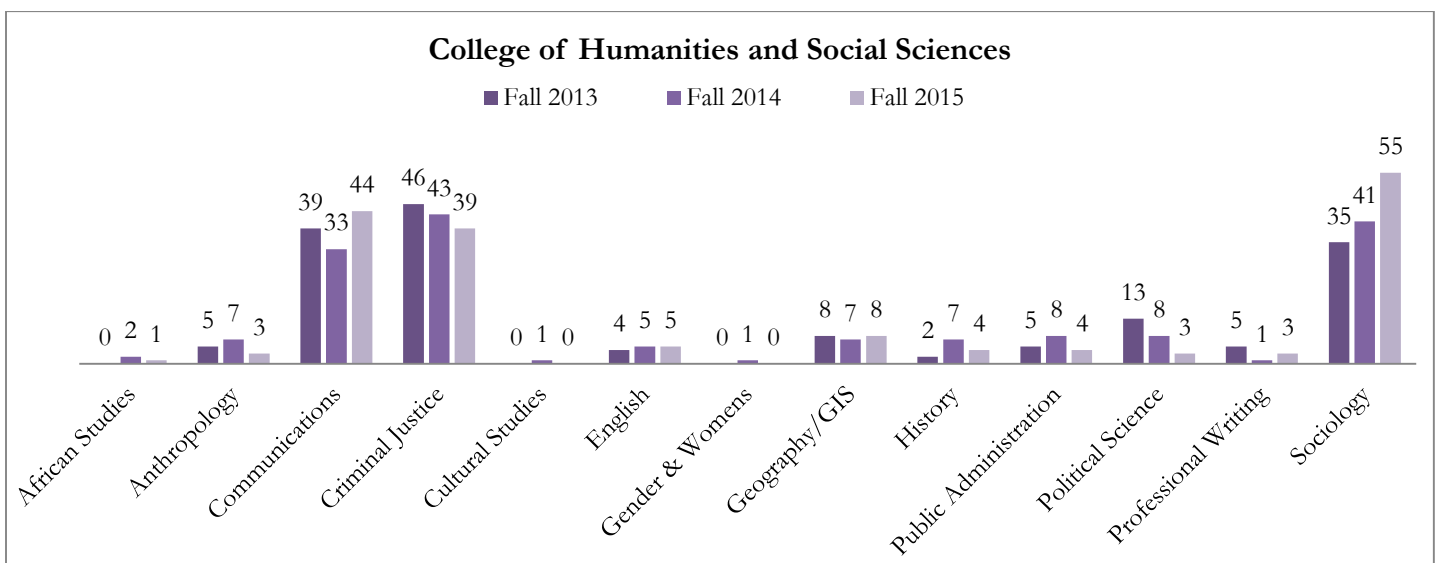
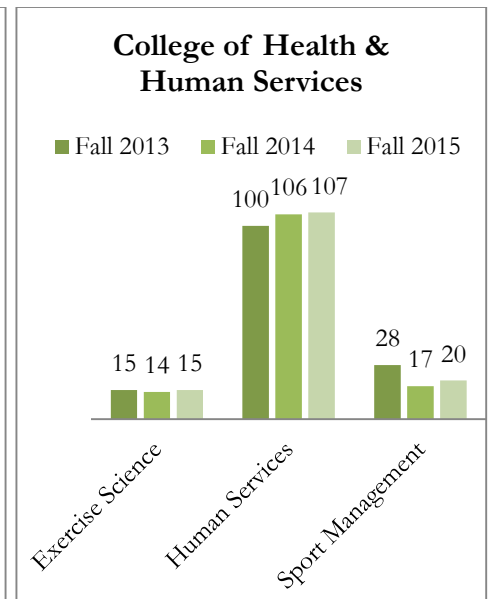
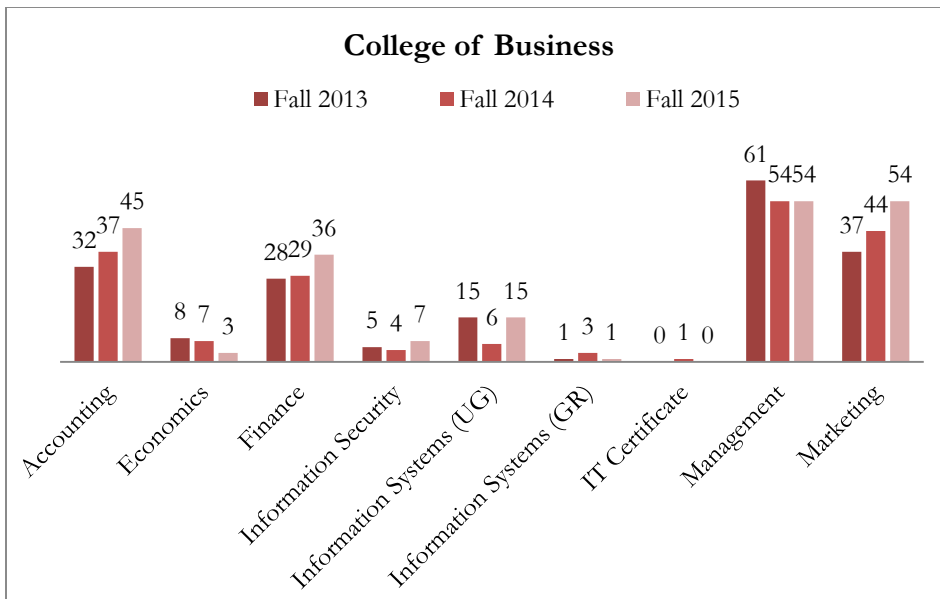
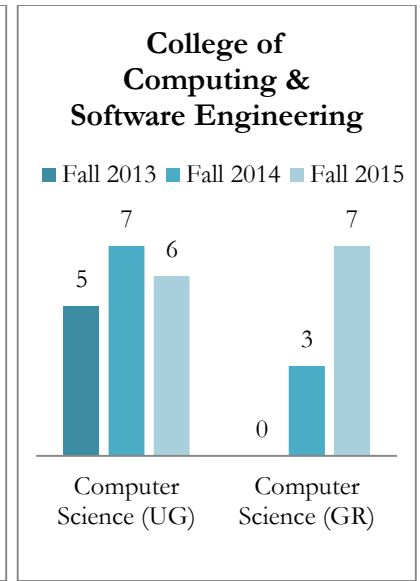
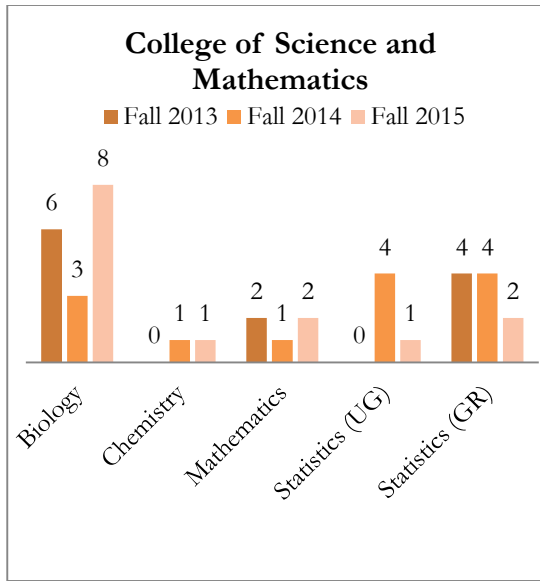
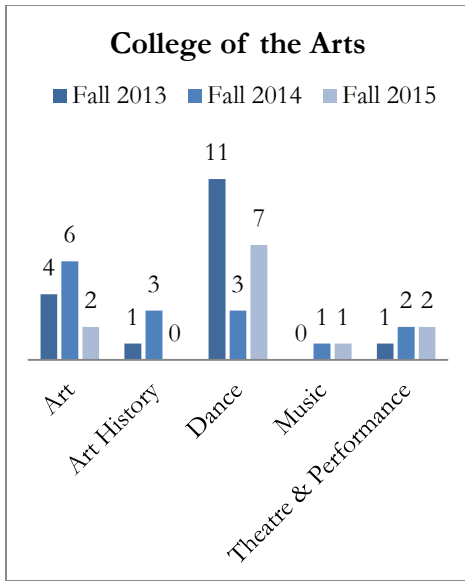
## Enrollment by College

College	2014 Count	2015 Count
Arts	15	<b>11 (-2%)</b>
Business	185	<b>215 (+16%)</b>
Computing & Software Engineering*	10	<b>13 (+30%)</b>
Health & Human Services	137	<b>142 (+3%)</b>
Humanities & Social Sciences	164	<b>169 (+3%)</b>
Science & Mathematics	13	<b>14 (+7%)</b>

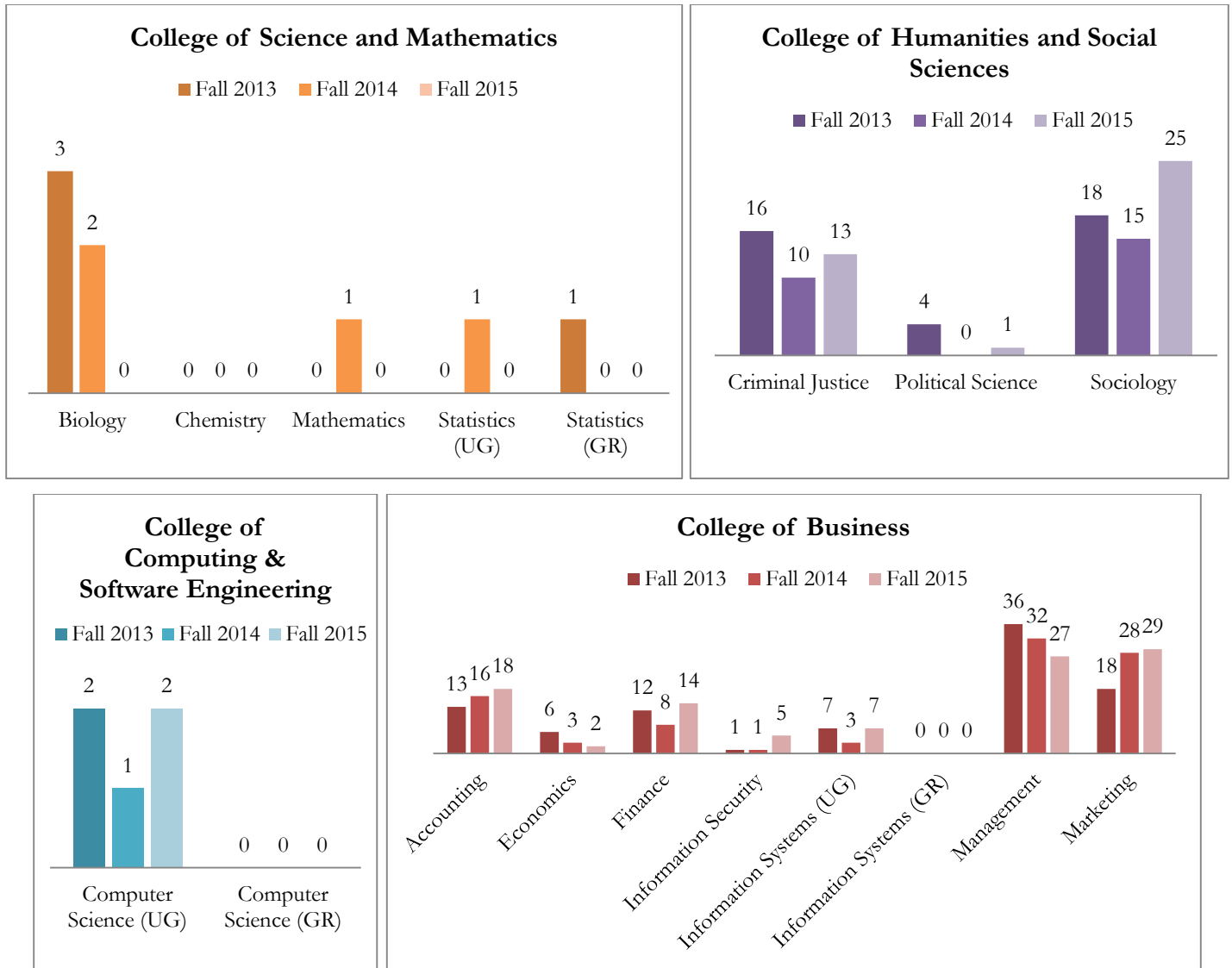


\*The College of Computing & Software Engineering count consists of Computer Science majors, previously housed under the College of Science and Mathematics.

## Total Enrollment by College

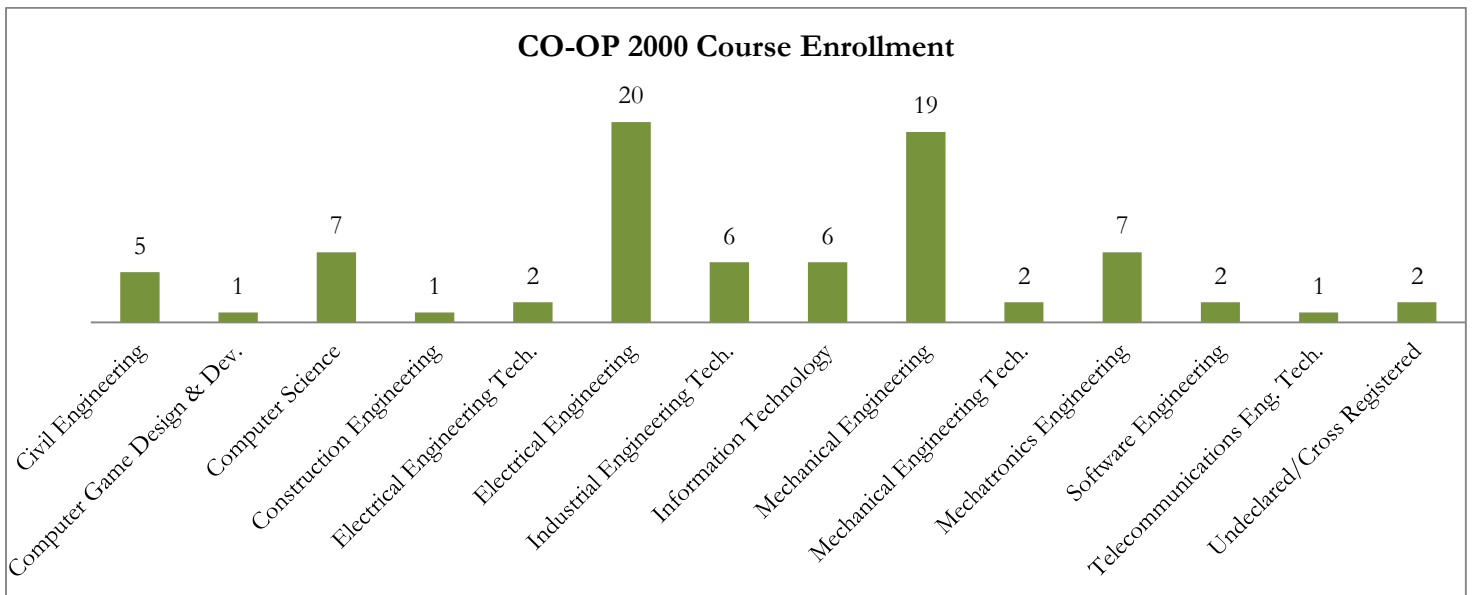


## Co-op Enrollment by College\*



\*Majors not included on this page do not traditionally offer a co-op option.

## Career Services Co-op Enrollment (by Major)



# Internship Enrollment by College

