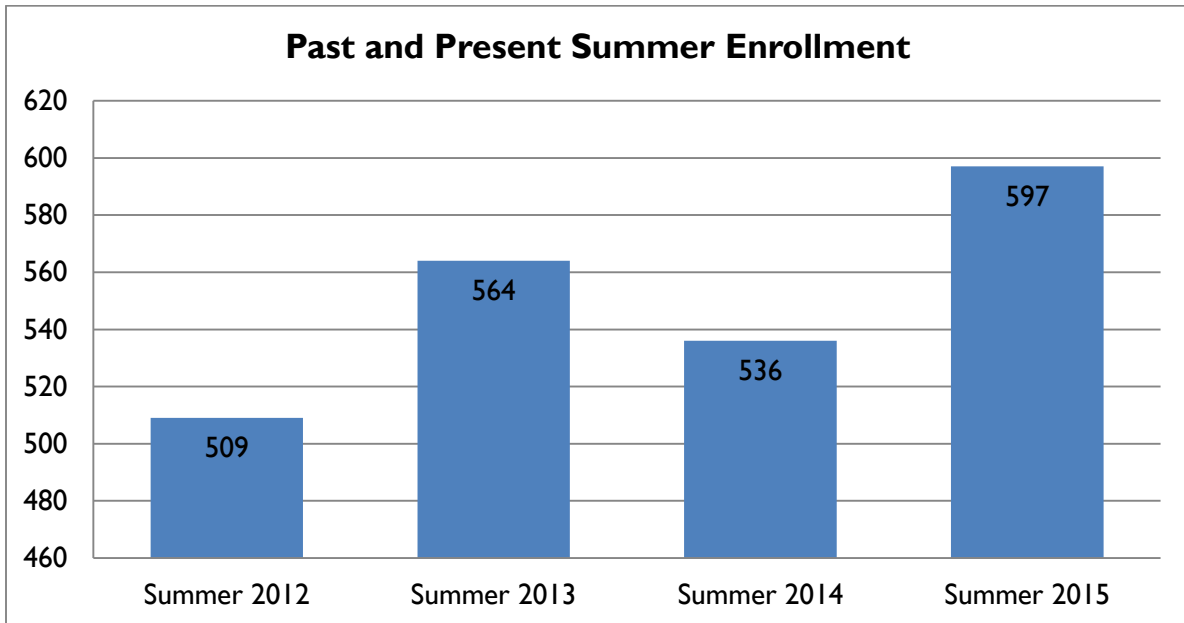
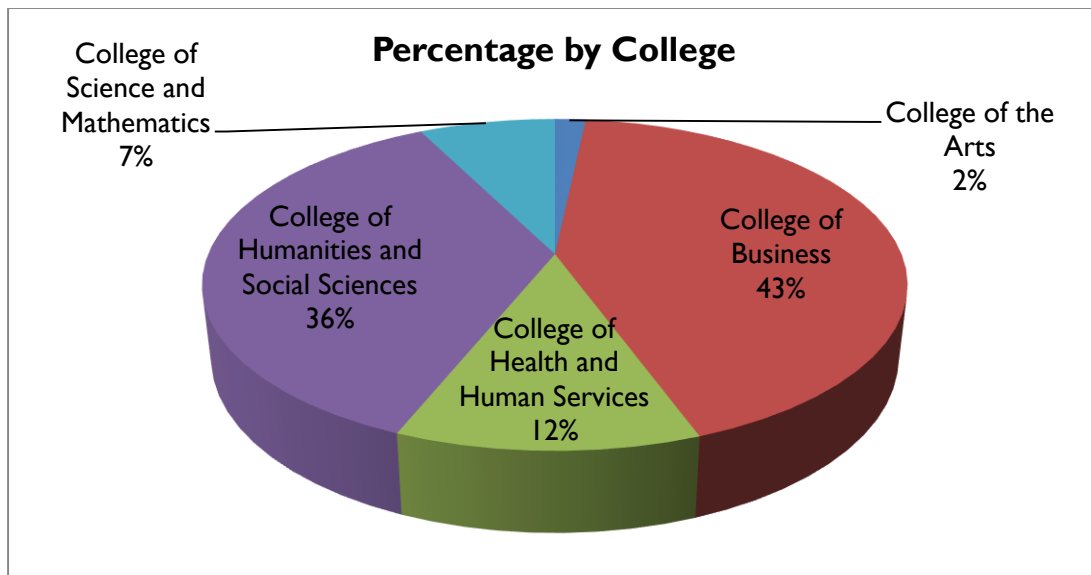


Experiential Education Summer 2015 Enrollment

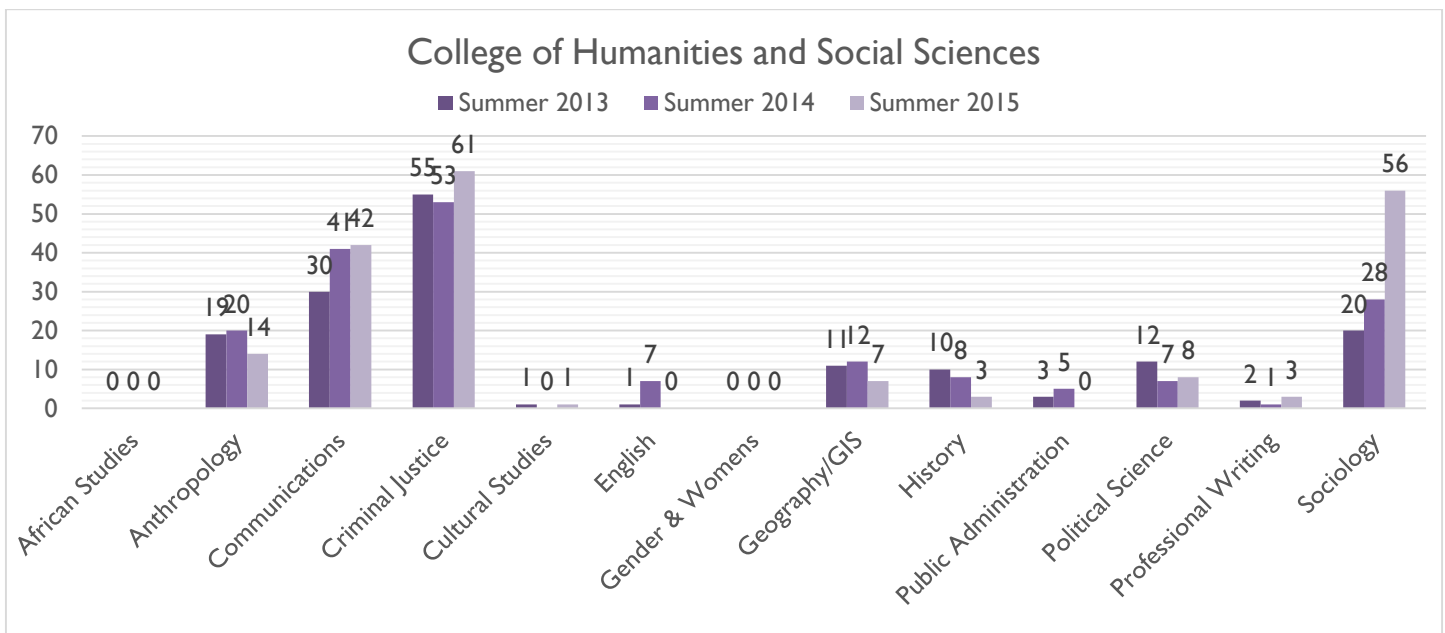
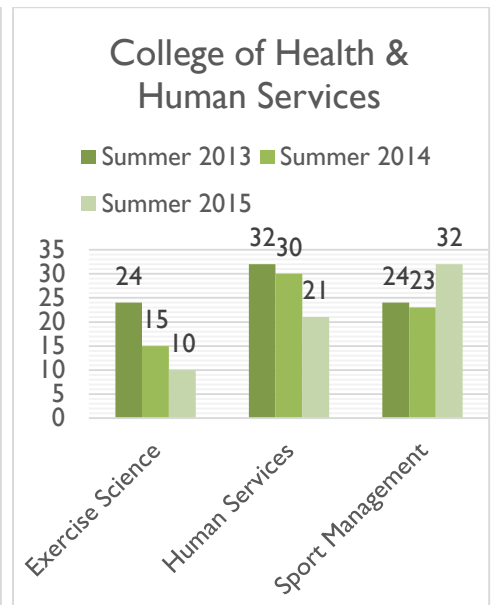
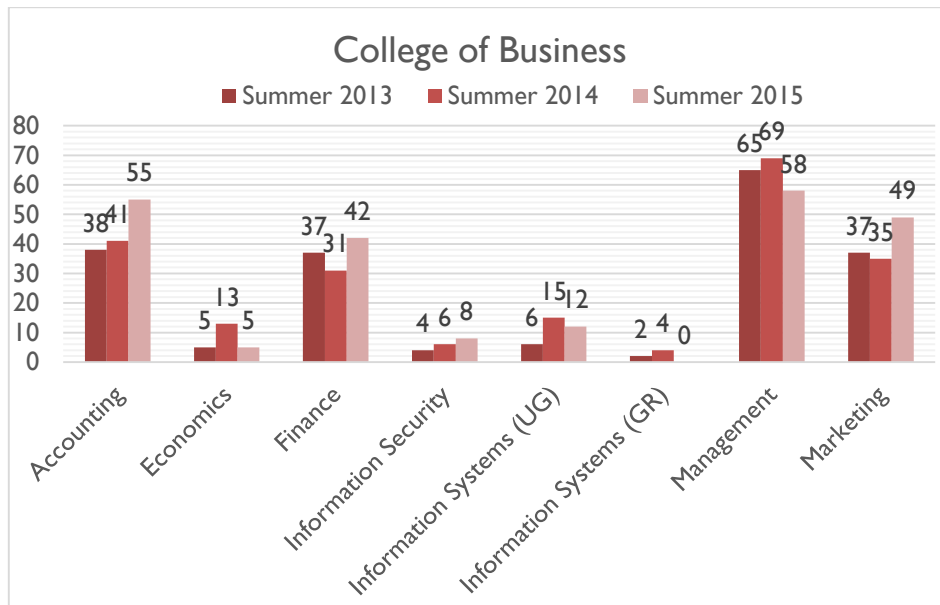
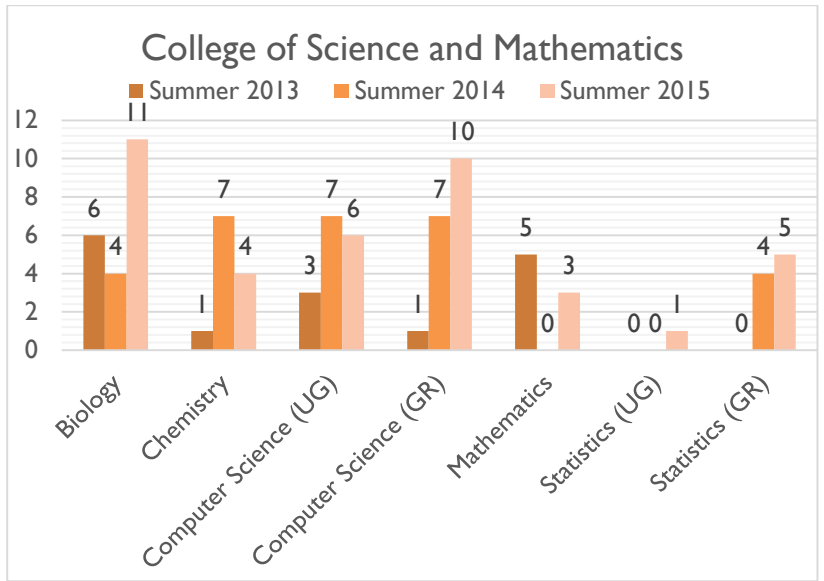
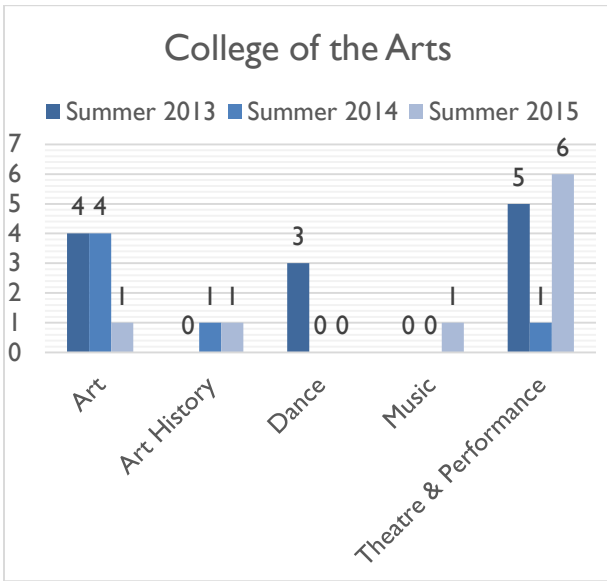


- ♦ **536** processed through Career Services, **61** outliers (as of 6/9/15)
- ♦ Career Services processed **90%** of all intern & co-op students
- ♦ Career Services processed **19% more** applications from Summer 2014, with an **11% overall increase** in enrollment from Summer 2014.

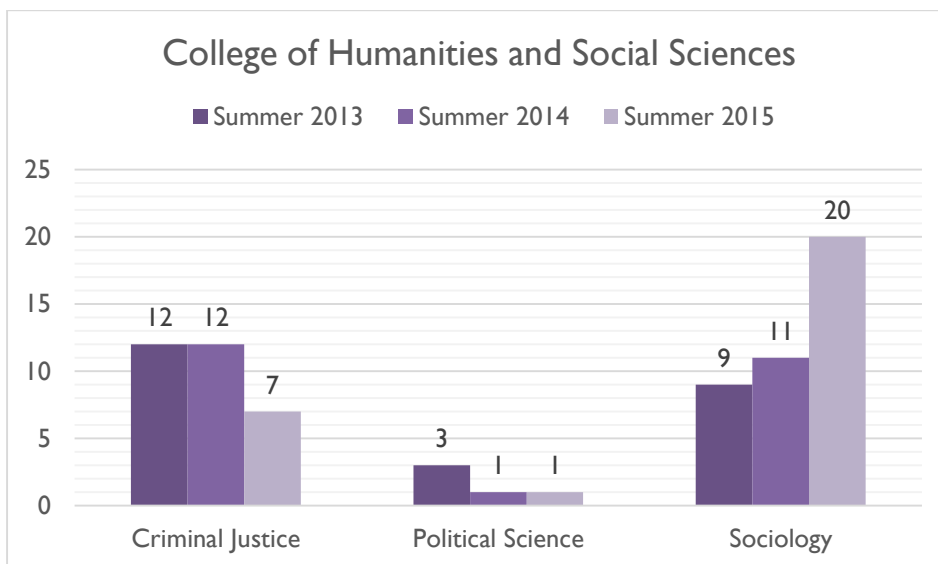
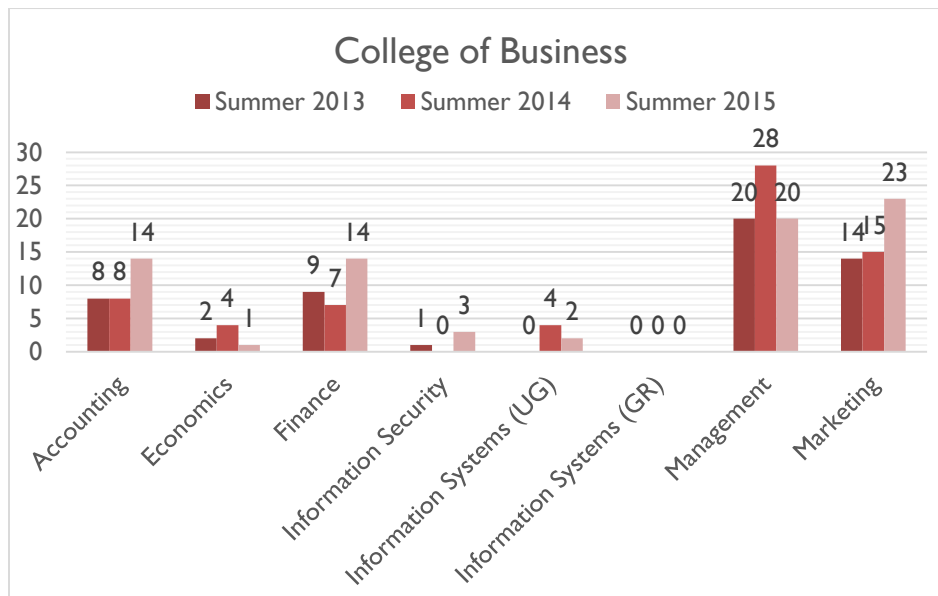
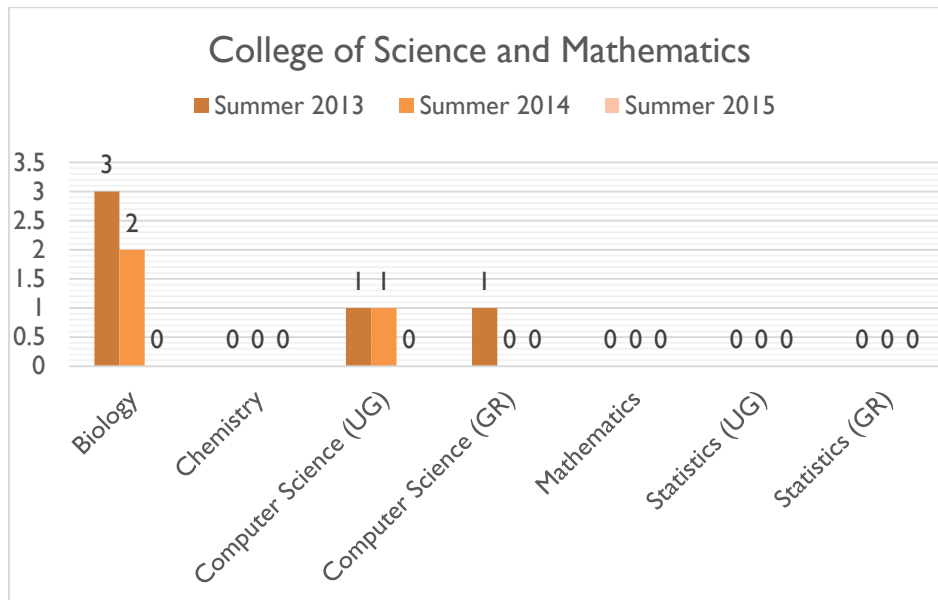


College	2014 Enrollment	2015 Enrollment
Arts	6	9 (↑50%)
Business	214	229 (↑7%)
Health & Human Services	68	63 (↓7%)
Humanities & Social Sciences	182	195 (↑7%)
Science & Mathematics	29	40 (↑38%)

Total Enrollment by College



Co-op Enrollment by College*



*Majors not included on this page do not traditionally offer a co-op option.

Internship Enrollment by College

